

# PROXIMA

CNC PLASMA CUTTING MACHINE



for impressive  
performances



The HACO PROXIMA CNC burning machine is a modern, high-performance item of equipment used throughout a wide spectrum of applications for the thermal division of material. The machine is used for the application of the technology of oxygen cutting and plasma cutting technology – conventional plasma and the latest plasma cutting systems (High Definition) This equipment can be also equipped with technologies used in the area of thermal cutting of metal materials and production of cutting parts/ drilling, marking, labelling /.



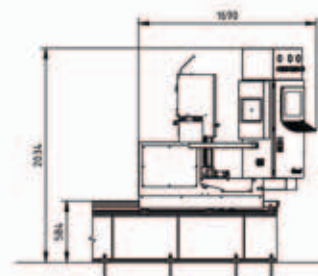


for impressive  
performances

## The advantages of the HACO PROXIMA

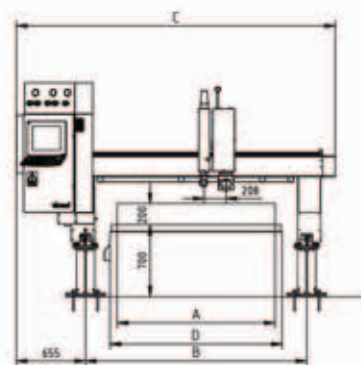
### technical solution:

- self-contained sizes of machines for a working width up to 6000 mm
- unlimited working length
- double-sided longitudinal travel path
- linear bearing guiding in all axes
- exact control of the working area of the torch
- exact control of the ignition height of the torch
- high accuracy of the positioning also after long-term operation
- excellent dynamic properties of the machine
- minimisation of any unproductive time during operation
- high-performance, stable, user-friendly CNC



### Standard equipment:

- double-sided portal drive
- longitudinal reinforced IPE beams
- flexible energy chains
- electronic regulation of the height of the torch
- electric ignition of the oxyacetylene torch
- transfer of cutting plans by LAN network
- exact control of the height of the plasma torches
- pneumatic-electrical adjustment of the ignition height of the plasma torch.
- servo-control for cut-off (piercing)



### Optional equipment:

- marking unit – plasma marking
- marking unit – micro-punching
- marking unit – drawing needle
- drilling unit
- unit for contact control of the height of the plasma torch – for cutting of thin sheets
- oxyacetylene burner unit for burning of direct bevels (V,X)
- CAD/CAM software for the preparation of burning data

The machine can be delivered as a part of the complete delivery of the whole cutting workplace, i.e. including the plasma source and the consuming parts for plasma cutting or oxyacetylene cutting, the compressor for the air supply, including air treatment, filter equipment for the exhaustion of burnt gases originated during the thermal cutting of materials.

Working width	A	[mm]	1 500	2 000	2 500	3 000	then by 500	up to 6 000
Width of the path	B	[mm]	2 100	2 600	3 100	3 600		up to 6 600
Total width of the machine	C	[mm]	3 025	3 525	4 025	4 525		up to 7 525
Working width with 1 support	D	[mm]	1 650	2 150	2 650	3 150		up to 6 150
Working length		[m]	according to requirement (3, 4, 6, 8, 10, 12, 14, 15, 18, 20, 22, max. 24)					
Height of material table		[mm]	650 – 700					
Maximum number of supports		[pcs]	4			4 (6)		
Maximum speed of movement		[m/min.]	30					



**HACO nv**  
Oekensestraat 120  
B-8800 Rumbeke (Belgium)  
tel. +32 (0)51 26 52 00  
fax +32 (0)51 26 52 01  
sales@haco.com  
www.haco.com

HACO reserves the right to change any specifications without prior notice and reserves the right to correct any clerical and typographical errors.  
01.2010 (non contractual document)